

SHELDON HARVEY'S ART IS ABOVE ALL ELSE A SPIRITUAL ART.

At the core of his work are the images he paints and sculpts of the people of the *air and diyin, the supernatural and sacred beings* from the Navajo creation and emergence stories.

These include the four First World figures that open this exhibition: dragonfly, beetle, locust, and bat. The spiritual, too, pervades his paintings of our own world: horses he's known, landscapes seen from airplanes high up.

Sheldon is an artist whose goal is to develop his ability to paint and sculpt his vision of the ancient *Navajo stories he's known since childhood*. His hope, he says, is to express the richness of "sandpaintings in new ways."

This he's done by cultivating his natural artistic talent by study at Dine College with artists like Don Whitesinger, and by looking closely at and learning from the works by contemporary Indian masters like Tony Abeyta and Alan Houser.

Sheldon also learned from a wide range of European and American artists whose work he sees in New York and Washington, DC galleries, such as Paul Klee, Egon Schiele, Jackson Pollock, and Alberto Giacometti.

What is striking is how quickly Sheldon absorbs ideas and techniques he learns from other artists and makes them his own.

Impressive, too, is Sheldon's artistic development over the past six years, from an apprentice of obvious talent into an increasingly sophisticated painter and sculptor *regularly producing works of great beauty and energy*.

This exhibition traces that development.

In the 2005 Santa Fe Indian Market Sheldon took a first place in sculpture and second in painting. In 2006, he won first place in oil painting. His sculptures and paintings are now found in collections throughout America and in Europe and Asia.

The great 20th century artist, Wassily Kandinsky wrote words that could apply to Sheldon: "I value only those artists who really are artists, that is, who consciously or unconsciously, in an entirely original form, embody the expression of their inner life; who work only for this end and cannot work otherwise."

— Stephen Goode

Sheldon Harvey

SHELDON HARVEY — *Diné*
Lukachukai, Arizona

Maternal Clan *Táchii'níí* — Red Streaks
Running into Water Clan
Paternal Clan *Áshjį́hí* — Salt Clan
Maternal Grandfather Clan *Ta'neezahníí* — Rough
Land Formation Clan or
Tangled Land People Clan
Paternal Grandfather Clan *Bit'ahníí* — Folded Arm Clan



THANK YOU TO THE LENDERS

Robert & Anita Andrews
Andrews Pueblo Pottery & Art Gallery
Diane Bloom
Mr. & Mrs. R. Crabtree
Eason Eige
Donna Epler
Sheldon Harvey
Jason Hinkes
Sally Ingle
Stephen P. Jones
Barbara Kelly
David & Robin Palmer-Kulwicki
Virgil Ortiz
Mark Perkins
Mike & Allison Bird-Romero
Mr. & Mrs. Lou Robichaud
Susan Howarth-Rhodes
Henry & Lou Schuyler
William D. & Patty Sherborne
Scott Smudsky
Dale & Yvonne Stokes
Jan Toppino
Tom & Liza Volkmann
Carole Ward
Tracy Whiting

GALLERY GUIDE FUNDED BY

Carole Ward in memory of
Carmen Lewis Ward

GUEST CURATOR

Eason Eige

An exhibition produced with Andrews Pueblo Pottery and
Art Gallery, Old Town, Albuquerque, NM • 877-606-0543.

Co-sponsored by Quality Inn of Window Rock — call for special
museum rates and reservations, 800-662-6189 or 928-871-4108.



Photo of Sheldon Harvey by Kenji Kawano. Photos of artworks by Clarends Begay. Navajo translation by Robert Johnson. Design by Creative Geosion, Farmington, NM.

Hajínéí • Emergence

THE ART OF SHELDON HARVEY

NAVAJO NATION MUSEUM
WINDOW ROCK, ARIZONA



Hódeez' yéél • Ambiance

An image of peace, dim light and beauty.
Oil on canvas, 24h" x 36w", 2006
LENT BY MR. & MRS. E. ROBICHAUD, SOUTHTINGTON, CT



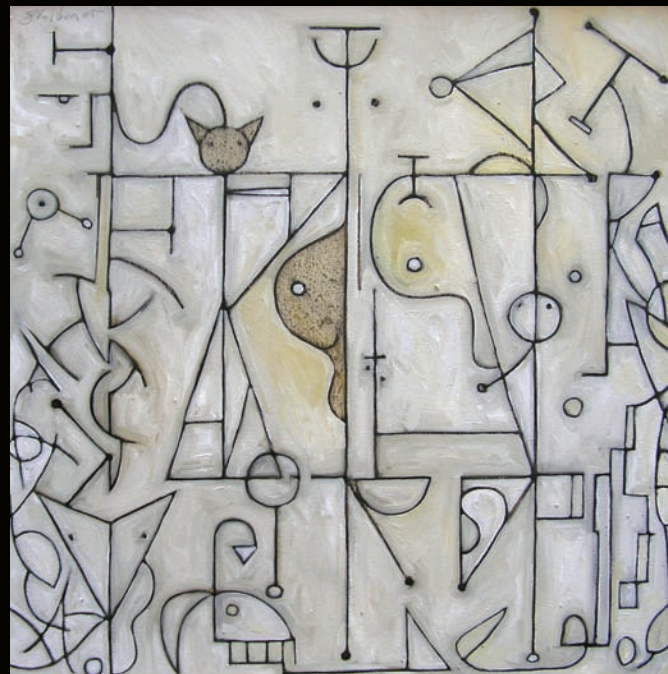
Mqii Lichii' • Red Coyote

Oil on canvas, 14h" x 11w", 2005
LENT BY ROBERT & ANITA ANDREWS, ALBUQUERQUE, NM



'Iiná bee 'Akék' eheeschiin • Map of Life

Oil on canvas, 36h" x 36w", 2005
LENT BY TOM & LIZA VOLKMANN, CORRALES, NM



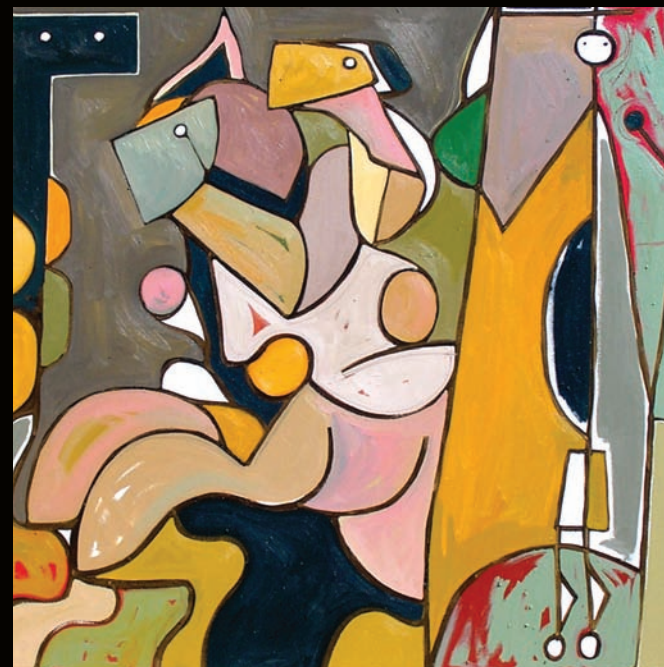
'Ayóo áhodni dóó Doo 'áhodíikóóhdá •

Mother and her Monster
Too much mother's care will create a monster.
Oil on canvas, 20h" x 16w", 2006
LENT BY DALE & YVONNE STOKES, ALBUQUERQUE, NM



Bits 'á ldeq' • Bold Departures

Society changes for the better to advancement.
In result tradition is forced to struggle to survive.
Oil on canvas, 36h" x 36w", 2006
GIFT TO THE NAVAJO NATION MUSEUM FROM
ROBERT F. ANDREWS, ALBUQUERQUE, NM



Só 'Ásdjíd • Fading Star

Experimenting with symbol and light painting technique.
Acrylic on canvas, 18h" x 18w", 2003
LENT BY EASON EIGE, ALBUQUERQUE, NM



Dó Dáá • No

Oil on canvas, 22h" x 28w", 2006
LENT BY VIRGIL ORTIZ, COCHITI, NM



**Nilñigü Baadádoolyeed • Where You
Are & Where You're Coming From**

Don't forget who you are as you leave your homeland.
There are many things that can change your appearance.
Be strong and retain your ways.
Oil on canvas, 28h" x 22w", 2005
LENT BY EASON EIGE, ALBUQUERQUE, NEW MEXICO



Shá bit'óól • Sunray

Sun rays shining through clouds during a storm.
Sculpture, 54h" x 11w" x 9d", 2006
LENT BY MR. & MRS. R. CRABTREE, BRED A HOLLAND

